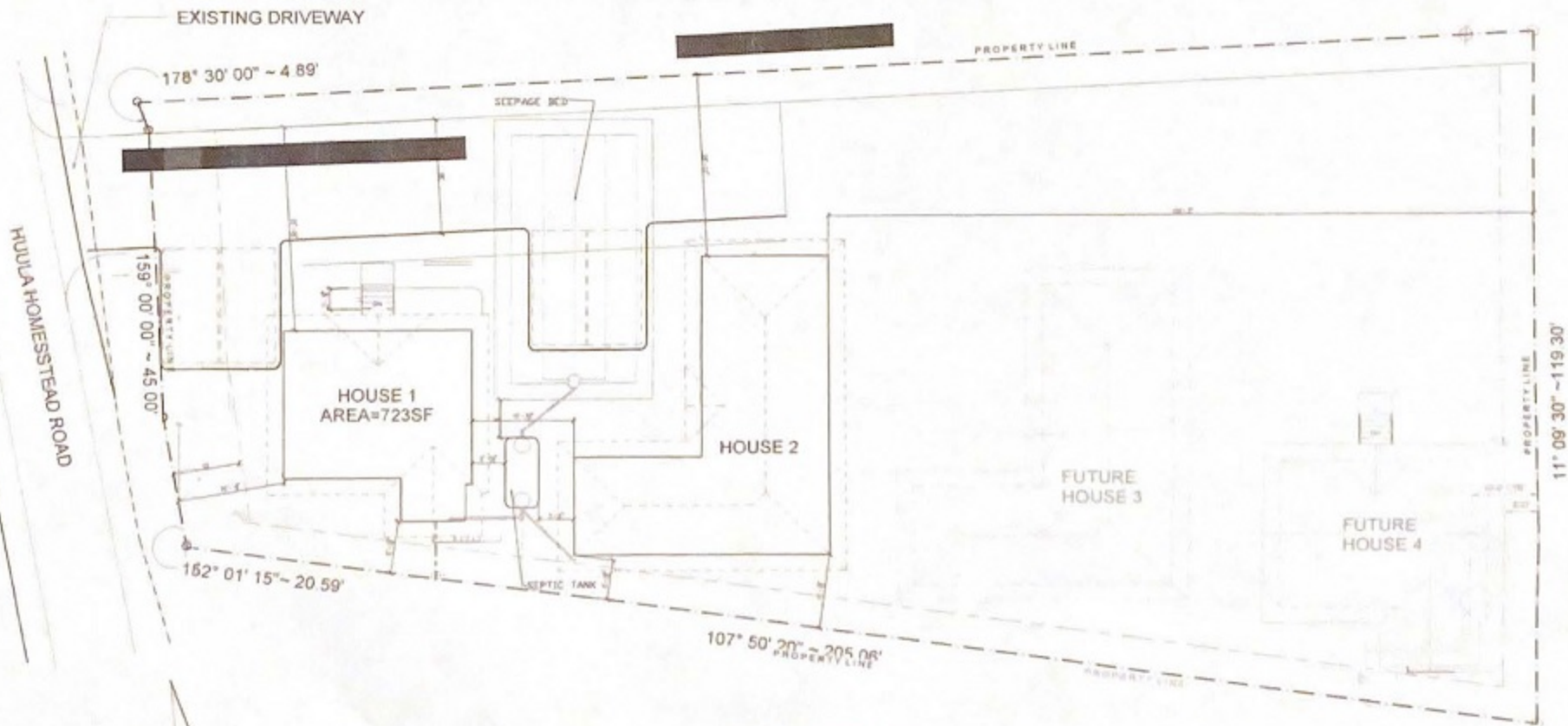


NOT TO SCALE. SELLER MAKES NO REPRESENTATION AS TO AMOUNT OF ADDITIONAL HOMES POSSIBLE



1
 APPROVED
Site Plan
 1/8" = 1'-0"

HAWAII ARCHITECT
 HAWAII ARCHITECTS, INC.
 JAMES M. MURPHY, ARCHITECT
 1000 KULUWAHAU DRIVE, SUITE 100
 HONOLULU, HAWAII 96813
 TEL: 808-531-3811
 FAX: 808-531-3812

Professional Engineer
 State of Hawaii
 License No. 10000
 J. J. JONES
 J. J. Jones, P.E.
 1000 KULUWAHAU DRIVE, SUITE 100
 HONOLULU, HAWAII 96813
 TEL: 808-531-3811
 FAX: 808-531-3812

54-103 Houli Homesstead Road
 TMB 5-4-007 000 (P&D)

Site Plan

File No. 3-100
 Drawn By: [Blank]
 Date: 08/01/16